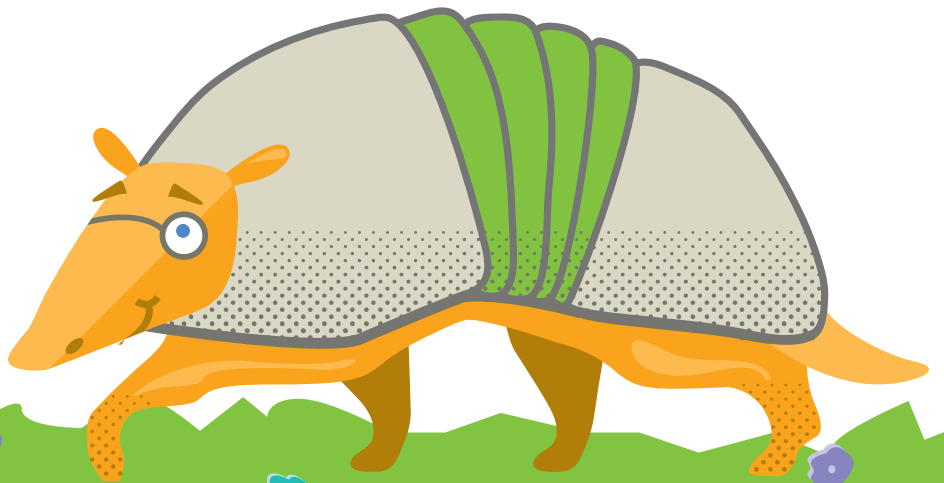




air
quality
with
Arlo
the airmadillo



Meet ARLO

Air North Texas has a new friend.

His name is Arlo and he's an airmadillo. Today he's here to explain why air quality in our region is something to care about. But first, let's get to know him.



ARLO SAYS:

Hi y'all! My name is Arlo. I'm an airmadillo, and I've lived in North Texas all of my life. I love living here, but a lot of other people live here, too. With so many cars on the road and so much power being used, we start to lessen the quality of our air. But if we work as a team and do the right things, we can make North Texas air healthy and breathable for everyone. Let's learn how!

HOMETOWN:

Arlington

FAVORITE COLOR:

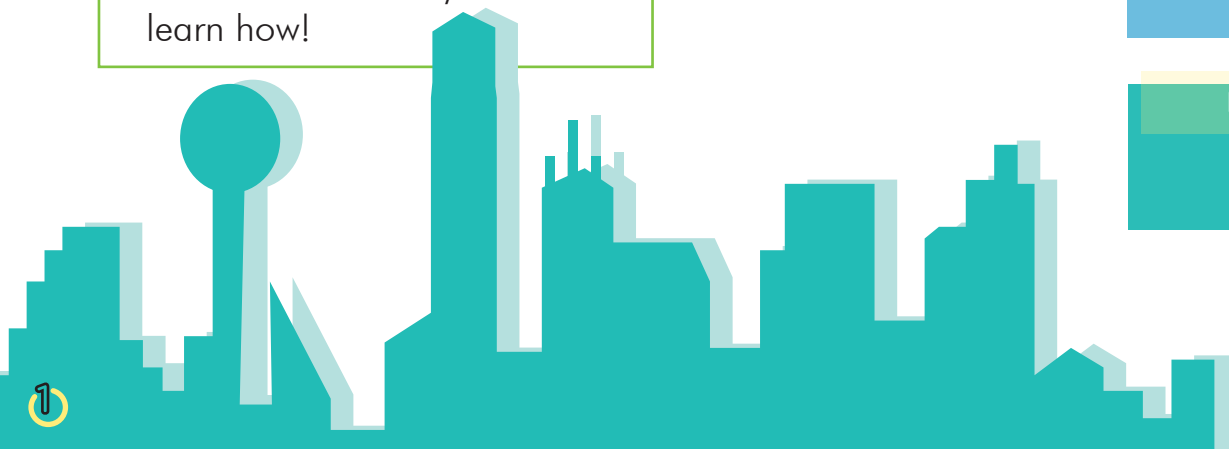
Green

FAVORITE ACTIVITY:

Biking

FAVORITE SCHOOL:

UTA



North Texas

AIR QUALITY and you

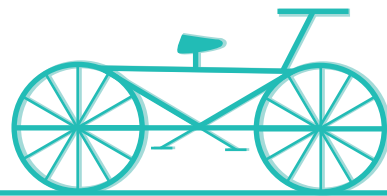
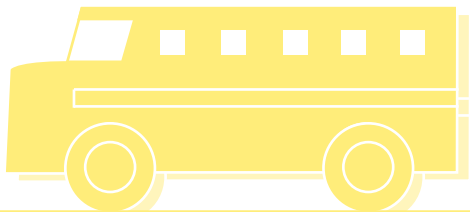
WHY IT MATTERS.

The air quality in North Texas is not as clean as it could be. Pollution, from cars and factories, mixes with sunlight and hot temperatures and forms ground-level ozone. When this happens, it is harmful to people, animals, crops, and trees.

FUN FACT BOX

WHAT IS AQI?

AQI means Air Quality Index. This scale measures outdoor air quality. On days when the air is not safe, an Air Pollution Alert goes out. Green and yellow mean the air is safe, so we can go out and play sports. Orange, red, and purple mean the air quality is poor and we should stay indoors.



HELPING HAND

WHAT YOU CAN DO.

You can reduce air pollution and help improve air quality by biking, walking, or skateboarding to school or friends' houses. You can also ride the school bus, take your lunch to school in reusable containers, recycle, turn off the lights when you leave a room, and inform your friends about actions they can take as well.

Want to learn more about air quality?

Visit AirNorthTexas.org!

I, _____,
WILL DO MY
BEST TO HELP
IMPROVE AIR
QUALITY IN
NORTH TEXAS.

Clean Air CONTRACT

I will do one or more of the following...

- Ask my parents to drive the speed limit and reduce idling
- Bike, walk, or skateboard to school or friends' houses
- With parental permission, visit AirNorthTexas.org
- Take my lunch to school in a reusable container
- Ask my parents to maintain their vehicle(s)
- Turn off the lights when I leave a room
- Tell my friends about air quality
- Ride the school bus
- Recycle

Signature

Date



Identify AQI

WHAT IS AQI?

As mentioned before, the air quality index shows how breathable the air outside is. It determines whether or not we should stay indoors that day. When green, it's safe. When red, it's important to stay inside.

HOW TO PLAY

AQI uses different colors to explain how clean the air is. Draw a line from the colored cloud to the box indicating how clean the air is. Then draw a line to the definition that matches it.

GREEN

YELLOW

ORANGE

RED

PURPLE

CLEAN

VERY
DIRTY

NOT
CLEAN
ENOUGH
FOR ALL

VERY
CLEAN

DIRTY

The air is unhealthy to breathe for everyone. Stay indoors.

The air isn't as clean as a green day, but it's still okay to go outside.

The air is nice and healthy to breathe for all. Go outside and play!

The air isn't healthy to breathe if you have asthma. Take it easy if you go outside.

The air is VERY bad and unsafe for all. Make sure to stay in.

Ozone ORDER

HOW TO PLAY

All of the following sentences relate to air quality and ozone. Unscramble the words below to reveal an important word that completes each phrase.



_____ (noeoz) is a gas that's found in both the earth's upper and lower atmospheres.

_____ (dgourn)-level ozone is different. It's found close to the earth's surface and is a serious pollutant.

Ground-level ozone is produced when _____ (ulnsight) combines and reacts with chemicals produced by cars, power plants, and factories.

High levels of ground-level ozone contributes to air _____ (lnplouiot).

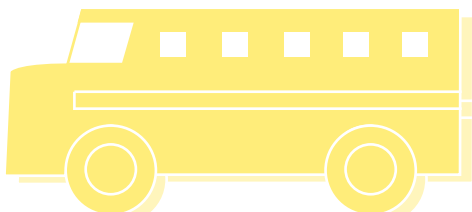
A lot of pollution in the air makes air quality poor and unhealthy to _____ (hbratee).

The Air _____ (lqaituy) Index was created by the Environmental Protection Agency to monitor outdoor air quality.

Green or _____ (lwlyeo) means the air is safe and breathable.

The Air Quality Index indicates when air quality is _____ (gndaoresu).

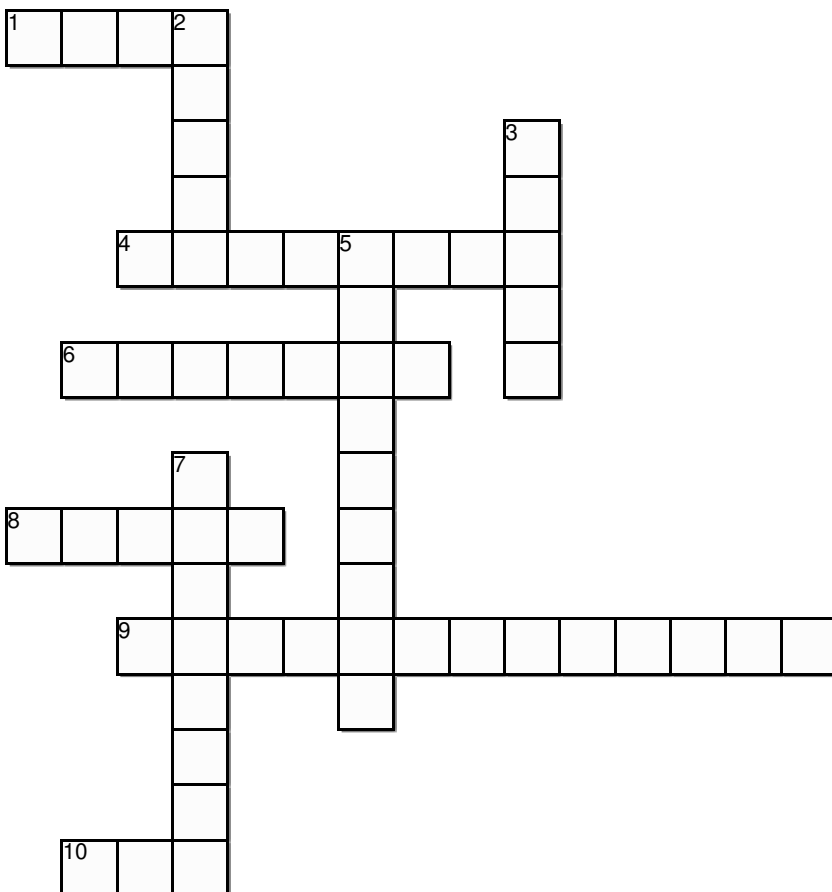
Orange, red, or _____ (lepru) means the air is not safe and you should limit outdoor activities.



Clean Air CROSSWORD

HOW TO PLAY

Solve the crossword below using clues related to air quality.



ACROSS

1. _____ is the name of the Air North Texas airmadillo.
4. Take your lunch to school in a _____ bag or container.
6. This has two wheels and is an environmentally friendly mode of transportation.
8. Air Quality _____ shows how safe the air outside is.
9. Visit _____ .org for more tips on improving air quality.
10. Ride the _____ to school with your friends.

DOWN

2. Ground-level _____ is a major pollutant in our region.
3. _____ is the best color on the Air Quality Index.
5. Arlo's hometown.
7. Your parents can help air quality by maintaining their _____.

Arlo's Outdoor ACTIVITIES

AQI IS GOOD TODAY!

The AQI in North Texas is green today! Arlo wants to go spend time outside, but there are so many options that he can't decide. He could play sports, ride a bike, or have a picnic.

WHAT DO YOU LIKE TO DO?

How do you like spending your time when it's nice outside? On a day with good air quality, what are your favorite activities? Give Arlo some ideas on how he can spend his day!

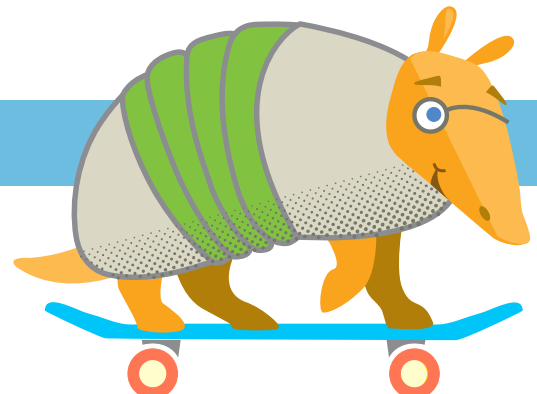
FAVORITE SPORTS

A PERFECT DAY OUTDOORS

How would you describe it?

FAVORITE PLACES

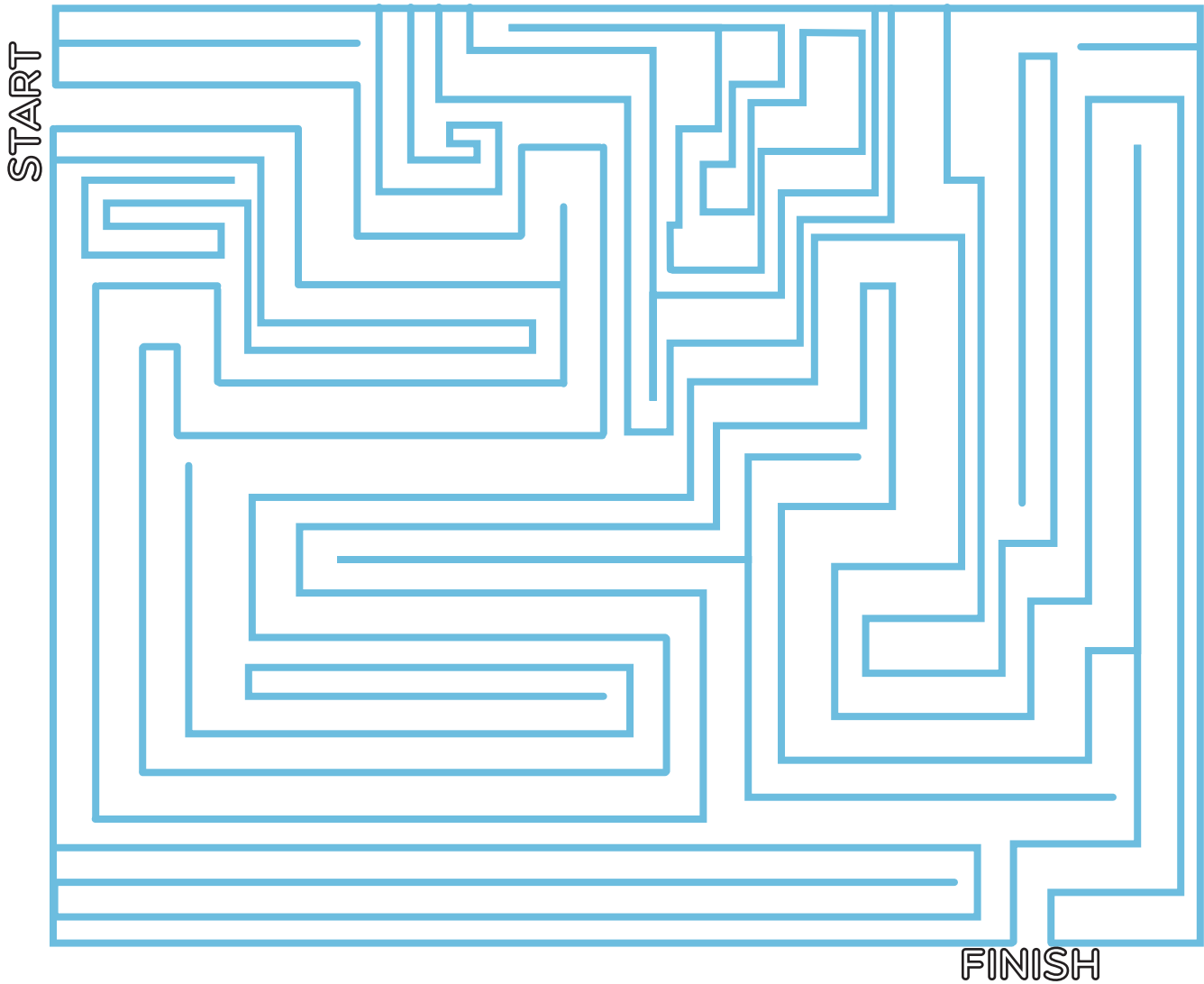
FAVORITE SNACKS



HOW TO PLAY

Arlo is carpooling to school today with a friend! Their normal route was closed with road construction. Help them find a new route so they can get to school on time!

Drive to SCHOOL



What you LEARNED

THINGS TO REMEMBER

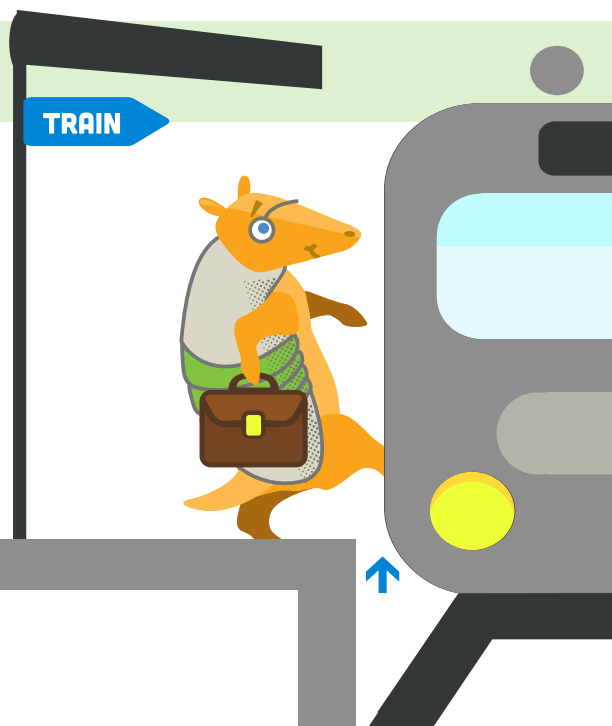
North Texas is home to many people.. more than six million! It's important that we all look out for each other to make sure our environment is safe for everyone. Bad air quality is dangerous, so it's important we work together to prevent it. Though you're only one person, every little change can make a difference. North Texas is our home, so let's make sure it's healthy and beautiful!

HOW IT HAPPENS

How does air quality get bad?

MAKE A DIFFERENCE

How can you help?



ANSWERS

IDENTIFY AQI

Green - Very Clean - The air is nice and healthy to breathe for everyone.

Yellow - Clean - The air isn't as clean as a green day, but it's still okay to go outside.

Orange - Not Clean Enough For All - The air isn't healthy to breathe if you have asthma. Take it easy if you go outside.

Red - Dirty - The air is unhealthy to breathe for everyone. Stay indoors.

Purple - Very Dirty- The air is VERY bad and unsafe for all. Make sure to stay in.

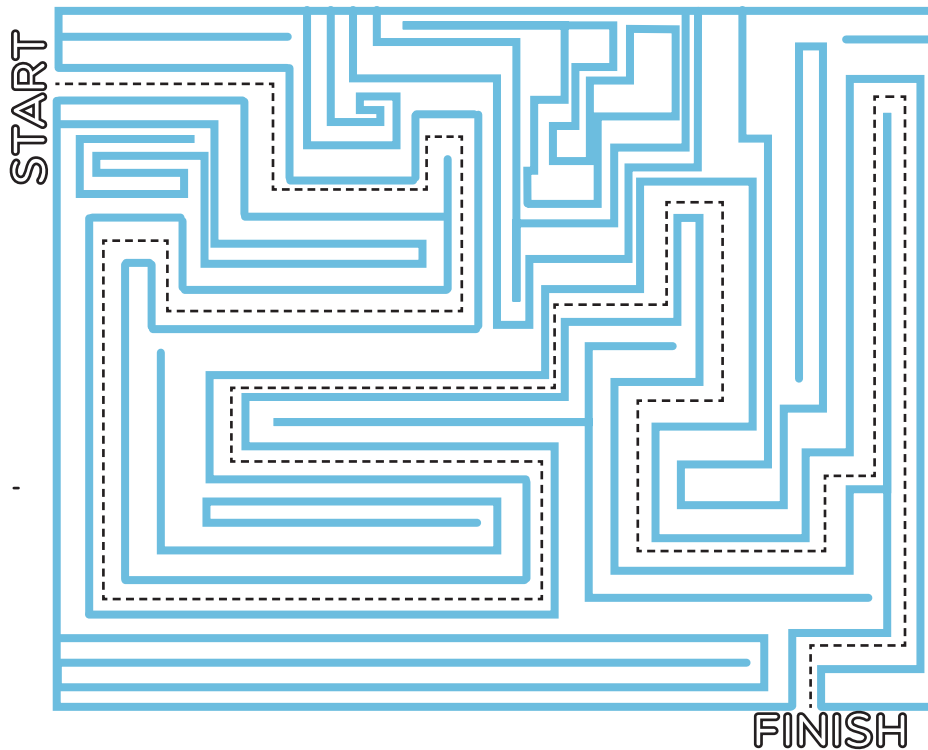
CLEAN AIR CROSSWORD

1. Arlo
2. Ozone
3. Green
4. Reusable
5. Arlington
6. Bicycle
7. Vehicles
8. Index
9. Air North Texas
10. Bus

OZONE ORDER

- Ozone
- Ground
- Sunlight
- Pollution
- Breathe
- Quality
- Yellow
- Dangerous
- Purple

DRIVE TO SCHOOL



THANKS FOR PLAYING!



visit
www.
airnorthtexas
.org

